



McDonald's Fashion Apparel Collection Style and Price Guide

Click or call today to place your order!

www.mcd.barcouniforms.com

888-498-6541



BarcoTM
uniforms

Customer Number



Vol. MCD-01-14

LOOK GREAT AND MAXIMIZE THE LIFE OF YOUR FASHION APPAREL

The fabrics and styles of your fashion apparel were designed with comfort and performance in mind. The following tips will also help maximize the life of your garments. Train your crew on these tips and best care practices to protect your investment!

AT HOME:

- For the best fit and comfort, **garments should be washed before wearing.**
- Your fashion apparel should be **washed after every wearing**, and as soon as possible if it has been stained. The longer the stain sits, the more difficult it is to wash out.
- **Pre-treat tough stains** with removers.
- **Follow the care instructions** located on the tag inside each garment.
- **Remove apparel from the dryer promptly** and **hang when not in use** to minimize wrinkling.
- If apparel must be **packed into a bag**, we suggest **rolling the garments into a log shape** to minimize wrinkling.
- **Remove name badges** before washing.
- Ties and hats are not machine washable. **Spot clean stains** as needed. **Hats should be hand washed. Neck wear should be dry cleaned.**

IN THE RESTAURANT:

- **Wear aprons** for protection while working in the kitchen area.
- **Keep a stain remover** at the restaurant for employees to pre-treat spots after a shift.
- **Keep an iron and ironing board** at the restaurant for employee touch ups to uniform shirts.

*Download a PDF of this insert with Fit & Care instructions from mcd.barouniforms.com for a quick reference or distribution to crew. You can also download handy employee sizing charts to keep on file!

Find us on McDonald's New
SpendSmart Marketplace



© 2014 McDonald's, the Golden Arches Logo and i'm lovin' it® are trademarks of McDonalds Corporation and its affiliates, used with permission.





All New Crew Fashion Apparel

The exciting new Crew apparel program features comfortable, athletic-inspired polos and modern styled button up shirts in a bright new red. New accessories provide vibrant pops of color.

The pants have had a makeover that offers an improved fit and a polished image. We've also added some great new outerwear to top it all off!

Crew

Shirts



NEW

MC346 Unisex Triathlon Polo
(XS-5XL) **\$10.55**



NEW

MC347 Female Triathlon Polo
(XS-5XL) **\$10.55**



NEW

MC330 Unisex Band Play
Woven Shirt (XS-5XL) **\$10.55**



NEW

MC331 Female Band Play
Woven Shirt (XS-5XL) **\$10.55**



MC690 Unisex Polo
(XS-5XL) **\$10.55**



MC700 Female Polo
(XS-5XL) **\$10.55**



MC699 Unisex Woven Shirt
(XS-5XL) **\$10.55**



MC701 Female Woven Shirt
(XS-5XL) **\$10.55**



MC357 Unisex Colorblock Polo
(XS-5XL) **\$10.55**



MC356 Female Colorblock Polo
(XS-5XL) **\$10.55**



MC359 Unisex Woven Shirt
(XS-5XL) **\$10.55**



MC360 Female Woven Shirt
(XS-5XL) **\$10.55**



NEW

MC327 Unisex Maintenance Shirt
(XS-5XL) **\$10.55**



NEW COLOR
Also in
Blue &
Black

MC361 Maternity Shirt
(XS-4XL) **\$10.55**

Bottoms



NEW

NEW FIT
28"
31"
33"
inseam

MC271 Female Flat-Front Pants
Expandable slider waists 18-34
(2-34 Evens) **\$10.75**



NEW

NEW FIT
30"
32"
34"
inseam

MC270 Men's Flat-Front Pants
Expandable slider waists 40-56
(Waists 28-56 Evens) **\$10.75**



Sizes
25-27
28"
inseam

Even
sizes
28-56

30"
32"
34"
inseam

MC262 Unisex Cargo Pants
(Waists 25-56) **\$10.75**



NEW

MC231 Universal Skirt
(0-34 Evens) **\$12.75**

Crew

			<div>Accessories</div>	
MC213 Male Pleated Shorts (Waists 27-56) \$9.75	MC214 Female Pleated Shorts (2-34) \$9.75	MC250 Maternity Pants (XS-4XL) \$11.75	 <div>NEW</div>	
				 <div>NEW</div>
MC704 Quality Cue Baseball Cap \$3.50	MC705 Quality Cue Visor \$3.50	MC712 Classic Baseball Cap \$2.55	MC713 Classic Visor \$2.55	MC768 Multi-Stripe Bib Apron \$7.50
 <div>NEW</div>				 <div>NEW</div>
MC767 Multi-Stripe Bistro Apron With Pocket \$6.00	MC769 Quality Cue Bib Apron \$6.00	MC770 Quality Cue Bistro Apron \$5.50	MC759 Classic Apron \$4.75	MC736 Striped Belt (M, L) \$2.50
				
MC735 Crew Belt (M, L) \$2.50	MC549 Female Tonal Striped Loop \$5.00	MC548 Male Tonal Striped Tie \$5.00	MC546 Unisex i'm lovin' it™ Tie \$5.00	MC547 Unisex Striped Skinny Tie \$5.00

						
MC835 Armband Tattoo Cover (Pair) \$5.50	MC907 Crew Minor Name Badge \$0.75 Blank/ \$1.00 Engraved	MC906 Crew Classic Name Badge \$0.75 Blank/ \$1.00 Engraved	MC914 French Fry Name Badge \$1.50 Dry Erase/ \$1.75 Engraved MC913 Big Mac Name Badge \$1.50 Dry Erase/ \$1.75 Engraved MC912 Sundae Badge \$1.50 Dry Erase/ \$1.75 Engraved			
<h2>Outerwear</h2> <p>Available September, 2014</p>						
			MC803 Unisex Drive-Thru Jacket (S-4XL) \$33.00	MC818 Unisex Fleece Jacket (S-4XL) \$19.95	MC815 Unisex Fleece Hooded Zip-Front Jacket (S-4XL) \$19.95	MC802 Unisex Freezer Jacket (S-4XL) \$48.95
			<h2>HHOT</h2>			
MC807 Unisex Mockneck (S-4XL) \$10.95	MC801 Unisex Quilted Vest (S-4XL) \$22.00	MC836 Unisex Colorblock Sweatshirt (S-4XL) \$11.95			MC827 Two-Tone High-Visibility Hat \$6.50	
		<p>Zip-off sleeves</p> 				
MC829 Insulated Beanie \$6.50	MC828 Class 2 High-Visibility Mesh Vest (M-4XL) \$6.50	MC826 Class 3 High-Visibility Bomber Jacket (M-4XL) \$67.95	MC834 Fleece Gloves (S-XL) \$11.95	MC764 Three-Pocket Apron \$6.75		
						
			MC720 Unisex Fingerless Gloves (M, L) \$6.00			

Manager Style

Managers take the lead in professional and fashionable new apparel with high-end style, as well as classic fabrics, textures and patterns.

New bottoms include a women's pant with contemporary styling and an updated fit, as well as a stylish pencil skirt option. Complete your look with modern neckwear styles in coordinating prints.

NEW MC177 Women's Soho
Black Pinstripe Short-Sleeve Shirt
(XS-4XL) **\$13.95**

NEW MC169 Maternity Soho
Black Pinstripe Shirt – not shown
(XS-4XL) **\$13.95**



Manager

Shirts



NEW

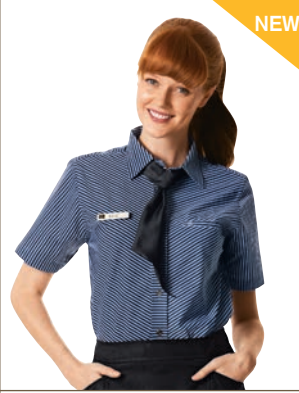
MC180 Men's Wired
Short-Sleeve Shirt
(14½-21) **\$13.95**



NEW

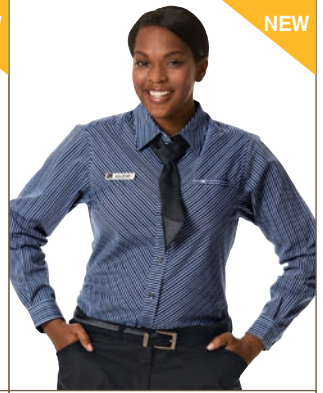
Sleeve
lengths
33"
35"
37"

MC186 Men's Wired
Long-Sleeve Shirt
(15-21) **\$14.50**



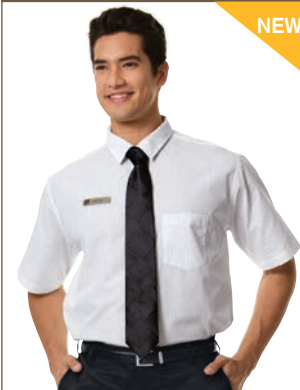
NEW

MC181 Women's Wired
Short-Sleeve Shirt
(XS-4XL) **\$13.95**



NEW

MC187 Women's Wired
Long-Sleeve Shirt
(XS-4XL) **\$14.50**



NEW

MC146 Men's White Pinstripe
Short-Sleeve Shirt
(14½-21) **\$13.95**



NEW

Sleeve
lengths
33"
35"
37"

MC148 Men's White Pinstripe
Long-Sleeve Shirt
(15-21) **\$14.50**



NEW

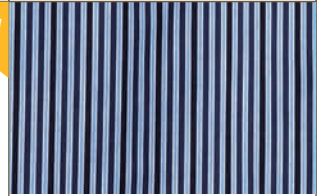
MC144
Maternity Solid
White Short-
Sleeve Shirt
NOT SHOWN
(XS-4XL)
\$13.95

MC147 Women's White Pinstripe
Short-Sleeve Shirt
(XS-4XL) **\$13.95**



NEW

MC149 Women's White Pinstripe
Long-Sleeve Shirt
(XS-4XL) **\$14.50**



Wired Pattern



White Pinstripe Pattern



NEW

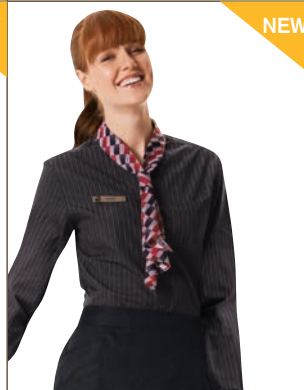
MC176 Men's Soho Black
Pinstripe Short-Sleeve Shirt
(14½-21) **\$13.95**



NEW

Sleeve
length
33"
35"
37"

MC178 Men's Soho Black
Pinstripe Long-Sleeve Shirt
(15-21) **\$14.50**



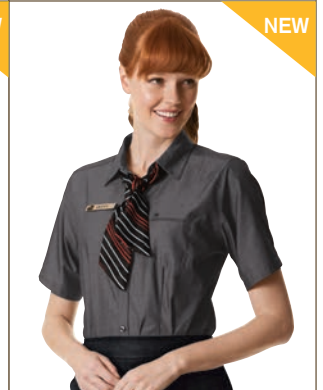
NEW

MC179 Women's Soho Black
Pinstripe Long-Sleeve Shirt
(XS-4XL) **\$14.50**



NEW

MC163 Men's Steel Chambray
Short-Sleeve Shirt
(14½-21) **\$13.95**



NEW

MC164 Women's Steel Chambray
Short-Sleeve Shirt
(XS-4XL) **\$13.95**



NEW

MC170 Men's Sienna Stripe
Short-Sleeve Shirt
(14½-21) **\$13.95**



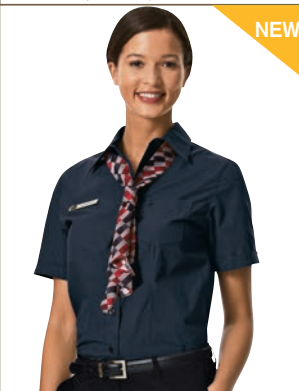
NEW

MC171 Women's Sienna Stripe
Short-Sleeve Shirt
(XS-4XL) **\$13.95**



NEW

MC184 Men's Blues
Short-Sleeve Shirt
(14½-21) **\$13.95**



NEW

MC185 Women's Blues
Short-Sleeve Shirt
(XS-4XL) **\$13.95**



Soho Black Pinstripe Pattern



Sienna Stripe Pattern

Bottoms



Improved Fit
28", 30", 33" inseam

MC223 Women's Flat-Front Pants
Expandable slider waist 14-34
(2-34 Evens) **\$14.75**



30", 32", 34" inseam

MC219 Men's Flat-Front Pants
Expandable slider waist 40-56
(Waists 27-33; 34-56 Evens) **\$14.75**



RPET-Polyester made from
recycled plastic bottles

*Selected accessories have been
made from **100% RPET**



MC251 Women's Maternity Pants
(XS-4XL) **\$15.75**



MC231 Women's Universal Skirt
(0-34 Evens) **\$12.75**

Outerwear

Sweaters available
September, 2014



MC838 Women's Cardigan
(S-4XL) **\$19.95**



MC837 Unisex Pullover Sweater
(S-4XL) **\$19.95**



MC839 Unisex Sweater Vest
(S-4XL) **\$24.00**



MC833 Unisex Jacket
(XS-4XL) **\$29.00**

Accessories



MC734 Manager Belt
(28-58 Evens) **\$6.50**



MC905 Tie Bar
\$5.00



MC903 Name Badge
Blank **\$1.95** Engraved **\$2.25**



MC904 Button Cover
\$5.00

  <p>MC580 Women's Fresh Stripe Self-Tie Neckpiece \$7.00</p>	  <p>MC570 Women's Texture Tie-Front Loop \$7.00</p>	  <p>MC576 Women's Circuit Knotted Scarf \$7.00</p>	  <p>MC572 Women's Laser Block Knotted Scarf \$7.00</p>
  <p>MC582 Women's Shadow Stripe Oblong Scarf \$7.00</p>	  <p>MC574 Women's Geo Grid Tie-Front Loop \$7.00</p>	  <p>MC584 Women's Simply Bold Pull-Through Tie \$7.00</p>	
  <p>MC571 Men's Laser Stripe Tie or MC571T Tall \$7.00 ea.</p>	  <p>MC579 Men's Fresh Stripe Tie \$7.00</p>	  <p>MC581 Men's Shadow Stripe Tie \$7.00</p>	  <p>MC569 Men's Texture Skinny Tie \$7.00</p>
  <p>MC583 Men's Simply Bold Skinny Tie \$7.00</p>	  <p>MC575 Men's Circuit Tie or MC575T Tall \$7.00 ea.</p>	  <p>MC573 Men's Geo Grid Tie \$7.00</p>	

MEN'S FIT&CARE
ALL SHIRTS AND
BOTTOMS

- Machine wash cold with like colors
- Use non-chlorine bleach only when needed
- Tumble dry, delicate
- Remove and hang promptly after drying

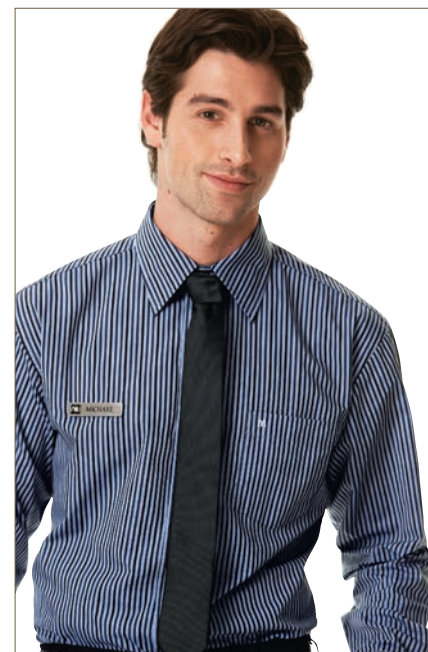
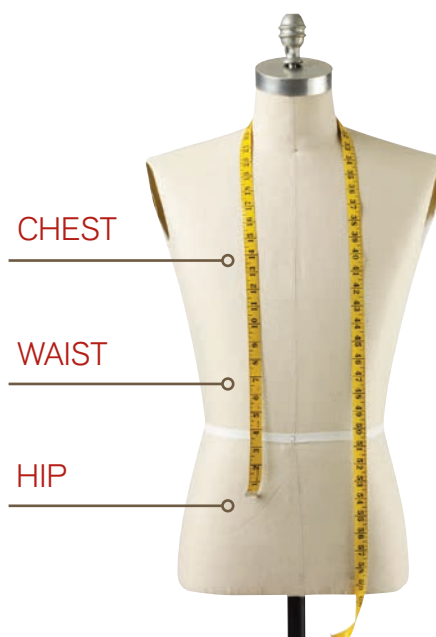
HOW TO MEASURE

Take all measurements over undergarments, using standard measuring tape.

Chest: Place measuring tape under the arms and measure the distance around the shoulder blades and the fullest part of the bust/chest. Hold measuring tape in a relaxed, straight line. Do not hold the tape too tight.

Waist: Place measuring tape around the natural waistline.

Low Hip: Stand with feet a few inches apart and measure around the fullest part of your hips wearing your undergarments.



MEN'S CREW SIZING:

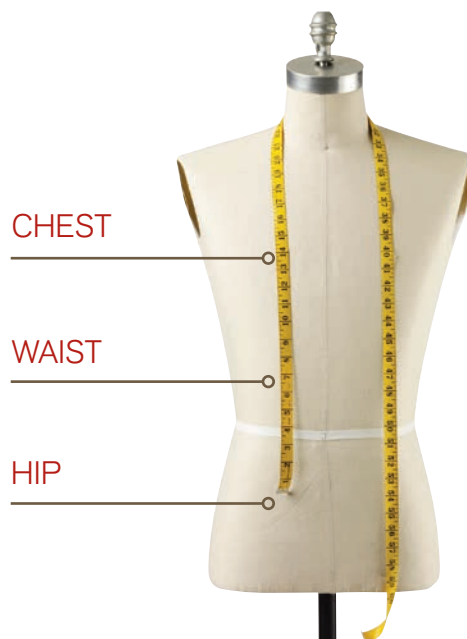
CREW PANT	Waist	27	28	29	30	32	34	36	38	40	42	44	46	48	50	52	54	56
	Approximate height guidelines for ordering men's pant length: 5'6" or less: 30" inseam 5'7" to 5'10": 32" inseam 5'11" to 6': 34" inseam																	

MEN'S MANAGER SIZING:

[illegible]

UNISEX SIZING:

SHIRTS	Sizes	XS		S		M		L		XL		2XL		3XL		4XL		5XL				
	Men's Chest	32		34-36		38-40		42-44		46-48		50-52		54-56		58-60		62-64				
	Female Bust	30-32		33-36		37-40		41-44		45-48		44-52		53-56		57-60		61-64				
CARGO PANT	Men's Waist	25	26	27	28	29	30	31	32	33	34	36	38	40	42	44	46	48	50	52	54	56
	Female	–	–	–	2	4	6	8	10	12	14	16	18	20	22	24	26	28	30	32	34	–
	Hip	33	34	35	36	37	38	39	40	41½	43	44½	46½	48½	50½	52½	54½	56½	58½	60½	62½	64½
	Approximate height guidelines for ordering ladies' pant length: 5'6" or less: 28" inseam 5'7" to 5'10": 30" inseam 5'11" to 6': 32" inseam 6'1" to 6'3": 34" inseam																					



WOMEN'S FIT & CARE ALL SHIRTS AND BOTTOMS

- Machine wash cold with like colors
- Use non-chlorine bleach only when needed
- Tumble dry, delicate
- Remove and hang promptly after drying

HOW TO MEASURE

Take all measurements over undergarments, using standard measuring tape.

Chest: Place measuring tape under the arms and measure the distance around the shoulder blades and the fullest part of the bust/chest. Hold measuring tape in a relaxed, straight line. Do not hold the tape too tight.

Waist: Place measuring tape around the natural waistline.

Low Hip: Stand with feet a few inches apart and measure around the fullest part of your hips wearing your undergarments.

FEMALE CREW SHIRT & PANT/SKIRT/SHORTS SIZING:

Shirt Size	XS			S		M		L		XL		2XL		3XL		4XL		5XL	
Pant Size	0	2	4	6	8	10	12	14	16	18	20	22	24	26	28	30	32	34	36
Bust	32	33	34	35	36	37	38½	40	41½	43½	45½	47½	49½	51½	53½	55½	57½	59½	61½
Waist	25½	26½	27½	28½	29½	30½	32	33½	35	37	39	41	43	45	47	49	51	53	55
Hip	35	36	37	38	39	40	41½	43	44½	46½	48½	50½	52½	54½	56½	58½	60½	62½	64½

Approximate height guidelines for ordering the correct female pant length:

5'6" and under: 28" inseam | 5'7" to 5'10": 31" inseam | 5'11" to 6': 33" inseam

WOMEN'S MANAGER SHIRT & PANT/SKIRT/SHORTS SIZING:

Shirt Size	XS		S		M		L		XL		2XL		3XL		4XL	
Pant Size	2	4	6	8	10	12	14	16	18	20	22	24	26	28	30	32
Bust	33	34	35	36	37	38½	40	41½	43½	45½	47½	49½	51½	53½	55½	57½
Waist	26½	27½	28½	29½	30½	32	33½	35	37	39	41	43	45	47	49	51
Hip	36	37	38	39	40	41½	43	44½	46½	48½	50½	52½	54½	56½	58½	60½

Approximate height guidelines for ordering the correct women's pant length:

5'6" and under: 28" inseam | 5'7" to 5'10": 30" inseam | 5'11" to 6': 33" inseam

WHEN SHOULD FEMALES ORDER A UNISEX CREW SHIRT?

Female shirts are contoured and unisex shirts are not. You should order unisex if you prefer a looser fit and a straight bodice. Females under 5'2" may prefer the ladies' fit, so your shirt isn't too long.